

A close-up photograph of an industrial robotic cutting machine. The machine is dark grey with various mechanical components, including a cutting head and a blue cable. In the foreground, there are several white, 3D-printed or cut-out objects, including a large 'X' shape and a circular piece. The background is slightly blurred, showing more of the machine and a workshop environment.

KOMBO TH

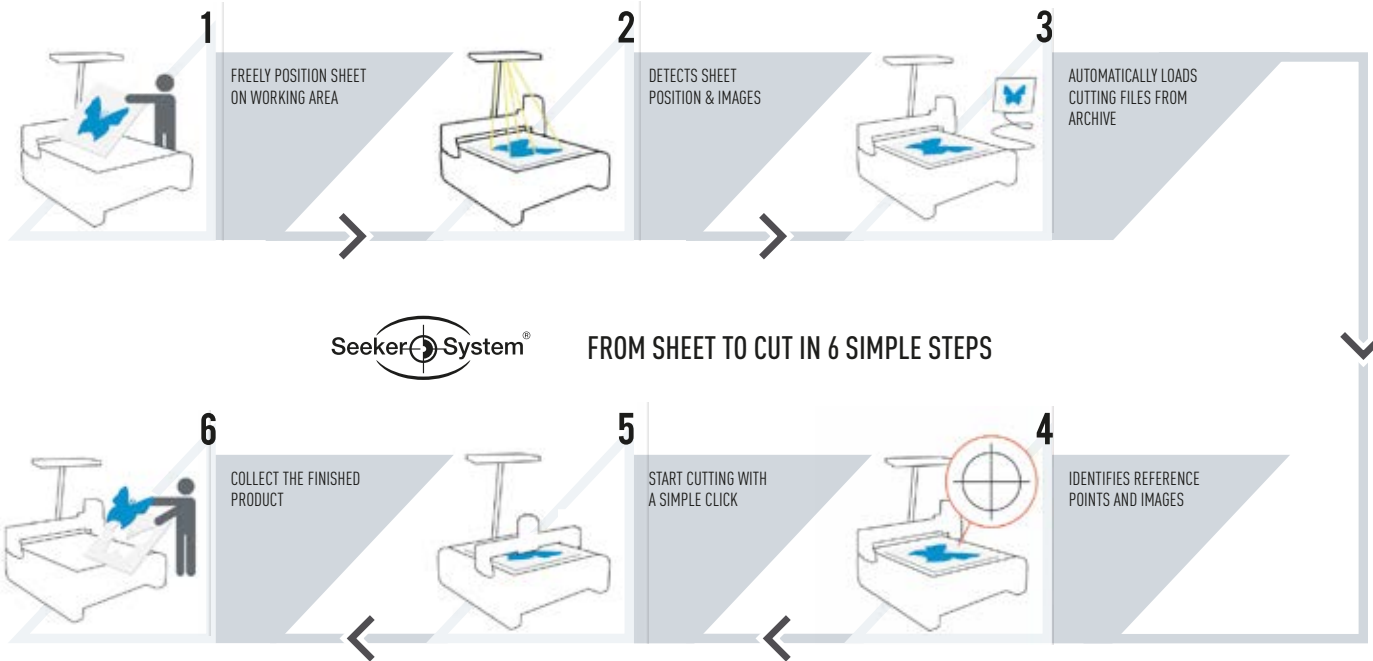
**AUTOMATIC
DIGITAL CUTTING SOLUTION
WITH TWO CUTTING HEADS**

KOMBO TH.
DOUBLE CUTTING HEADS,
DOUBLE PRODUCTIVITY.

Kombo TH is the flatbad digital cutting solution with double independent beam designed for those who must cope with great production workloads and demand top cutting performances. Precision motion mechanisms made by racks and inclined pinions ensure high quality finishing. Thanks to the TwinCut software, the workload of each cutting head gets balanced and smoothed so that overall throughput time is optimized and reduced to a minimum. Top class technology and Italian craftsmanship for High tier productivity.

MAIN BENEFITS

- High productivity thanks to the double cutting head
- Easy and quick process initialization thanks to Seeker System
- Material consumption optimization thanks to Videoprojection System
- Multi-material handling thanks to the multi tool cutting head
- Perfect material hold thanks to dynamic vacuum power
- Compatible with Industry 4.0.



Kombo TH

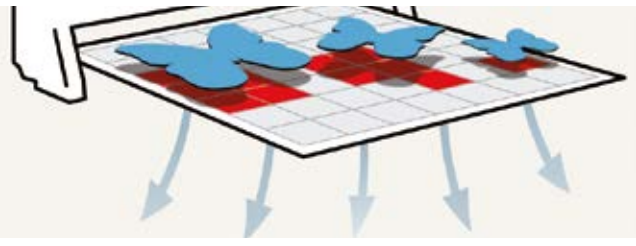


Video projection

High resolution Video Projection system for a quick and effective beta sampling. In a click it is possible to place the digital dies manually or automatically, **to guarantee the highest material yield, keep waste to the very minimum and reuse eventual scraps.**

Working Area

Robust cellular steel structure segmented in **40 vacuum sectors dynamically activated** to concentrate the suction **only where the cutting head is operating** for perfect hold of materials and high quality finishing even for tiny pieces.



Machine structure

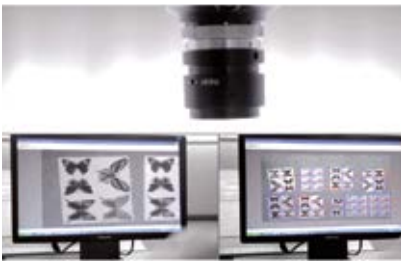
Solid steel structure which ensures constant planarity, higher resiliency to vibration and longer working performances.

Double multi-tool head



Two independent multi-tools heads with automatic pre-setting. For utmost **flexibility**, each head can be featured with **up to 5 tools at the same time**, so that **multiple materials can be processed together.**

Seeker System



Elitron's patented vision system.The operator can **simply and freely place as many sheets** as possible on the working area without any constraint. The system **automatically** scans the working area, **recognizes all the printed images**, loads each associated cutting file and **starts the cutting process in a snapshot.**

3D Milling



Ignite your creativity, and **increase your product offering using 3D Milling.** From initial technical drawing to perfect 3D eye-catching designs in just a few clicks. 3D files are imported, read & converted, to create the milling path file. Fast & smooth precision milling, for many materials: PVC, Wood, Foam & UREOL etc... **Release your 3D creativity.**

Work station
Ergonomic and independent work station to easily control the whole production cycle.



TOOLS

Wide range of tools which are easy and quick to set up for specific workloads.

- Electric and/or pneumatic fixed or oscillating knife cutting module
- Electrospindle milling module
- Creasing wheel module, with different diameters sizes up to 100mm
- Kiss cutting module
- 45° Knife module (other angles available)
- Pen module
- Laser pointer



MATERIALS

Kombo TH effectively cuts a wide variety of materials with precision and flexibility.

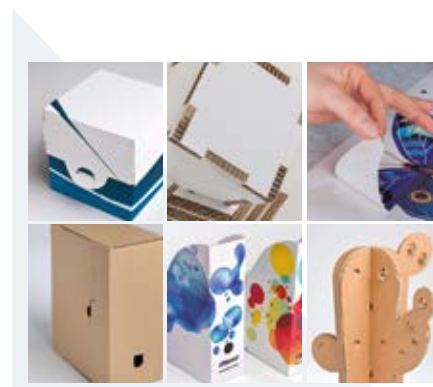
- Forex
- Dibond
- PVC
- Plastics
- Films
- Re-board
- Paper
- Cardboard
- Corrugated
- Plexiglas
- And many more



APPLICATIONS

Limitless creative possibilities for packaging and visual communications.

- Packaging
- POS displays
- Transparent containers
- Publicity banners
- Folders
- Files
- Boxes
- Embossed logos
- Trade fair stand panels
- Promotional flags
- Brochure holders
- And many more



TECHNICAL INFORMATION

| | KOMBO TH 31.20 | |
|---------------------------------|--------------------------|-------------------------------|
| Version | Standard | With video projection system* |
| Working area (mm) | 3150 x 2050 | |
| Suction sectors on working area | 40 | |
| Machine dimensions (mm) | 5310 x 2870 | 5800 x 3250 |
| Machine height (mm) | 1600 | 3160** |
| Working area height (mm) | 900 | |
| Electric power supply 1kW | Tri-phase 400 50Hz 17 kW | |
| Electric power supply 3kW | Tri-phase 400 50Hz 20 kW | |
| Pneumatic power supply | 8/10 bar 1600l/min | |

* Optional.

**If the Seeker System PRO is provided, the height is 3360 mm.

The technical specifications given in the table can be updated and modified as a result of any improvement and technological development of the systems.



HEAD OFFICE
Elitron IPM srl
 Viale I Maggio, 42
 63813 Monte Urano (FM) Italy
 ☎ +39 0734 842221
 elitron@elitron.com
www.elitron.com

USA BRANCH
Elitron America Inc.
 1650 Oakbrook Dr. Ste 425
 Norcross, GA 30093 USA
 ☎ +1 (844) 354-8766

Elitron 
 ROBOTIC CUTTING INTELLIGENCE