

# REVERSA

## LARGE FORMAT SHEET TURNING SYSTEM



**Elitron**  RESEARCHING  
FULL  
AUTOMATION

# LARGE FORMAT SHEET TURNING SYSTEM

Reversa is a system that allows to overturn the printed sheets of different size, type and thickness to facilitate processing after printing.

In the case of two-sided printing, it is also possible to turn over the sheets already printed to facilitate the printing of the second side.

The system of suction cups and bellows can be programmed in relation to different needs and guarantees the separation of the sheets even in the presence of critical materials.

The system is provided in two ways: stand-alone and integrated.

## Reversa Stand-alone

The system allows to process pallets sequentially, independently of the other processes.

Maximum loading height:

- 760 mm;
- 1200mm.

## Reversa Integrated

The system is an Integrated part of a production line, it intervenes only on the pallets to be processed and guarantees operational continuity, including the transit of the empty pallet from the loading to the unloading.

Maximum loading height:

- 1200 mm.

Reversa can be easily configured to receive and return sheets on both sides of the pallet. Depending of the printer, configuration 1 or 2 will be chosen.

1

ALIGNMENT OF THE INCOMING SHEETS



ALIGNMENT OF THE OUTGOING SHEETS

ALIGNMENT OF THE INCOMING SHEETS



ALIGNMENT OF THE OUTGOING SHEETS

2

ALIGNMENT OF THE INCOMING SHEETS



ALIGNMENT OF THE OUTGOING SHEETS

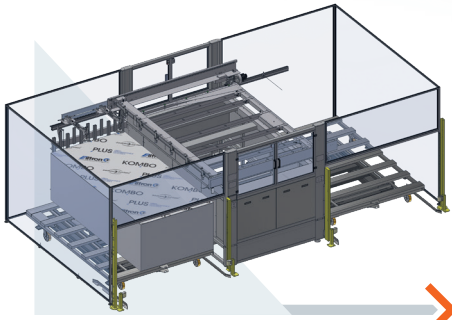
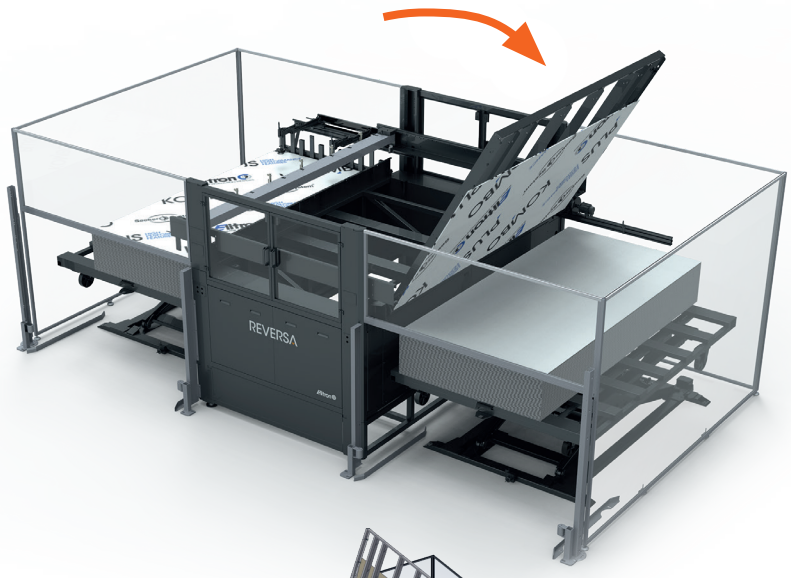
ALIGNMENT OF THE INCOMING SHEETS



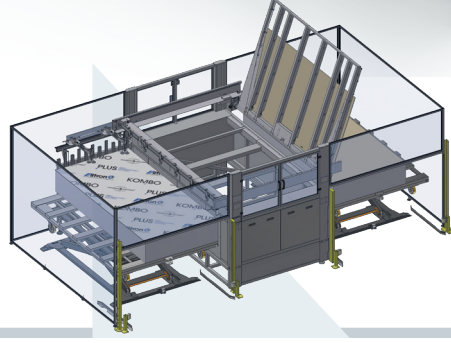
ALIGNMENT OF THE OUTGOING SHEETS



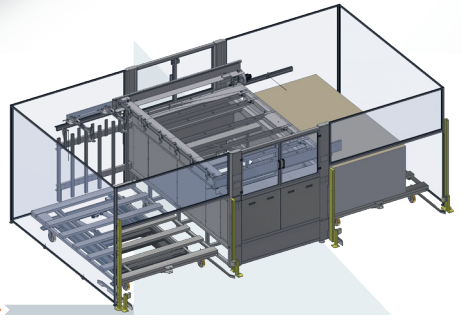
**REVERSA  
STAND-ALONE**



1

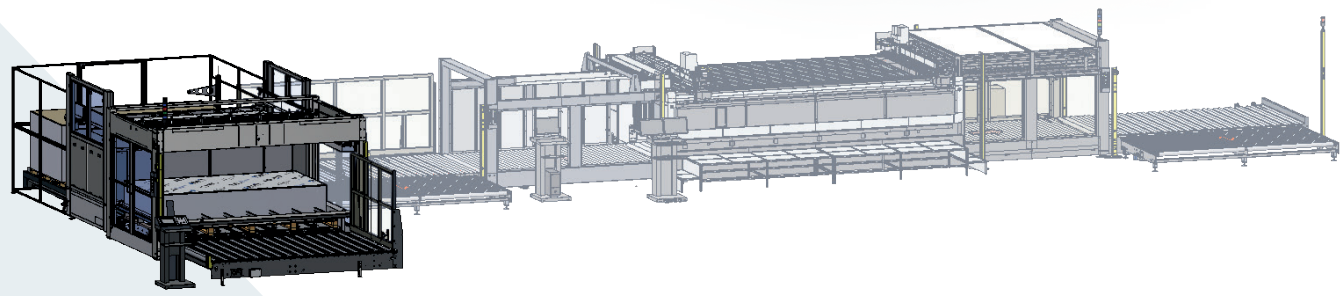
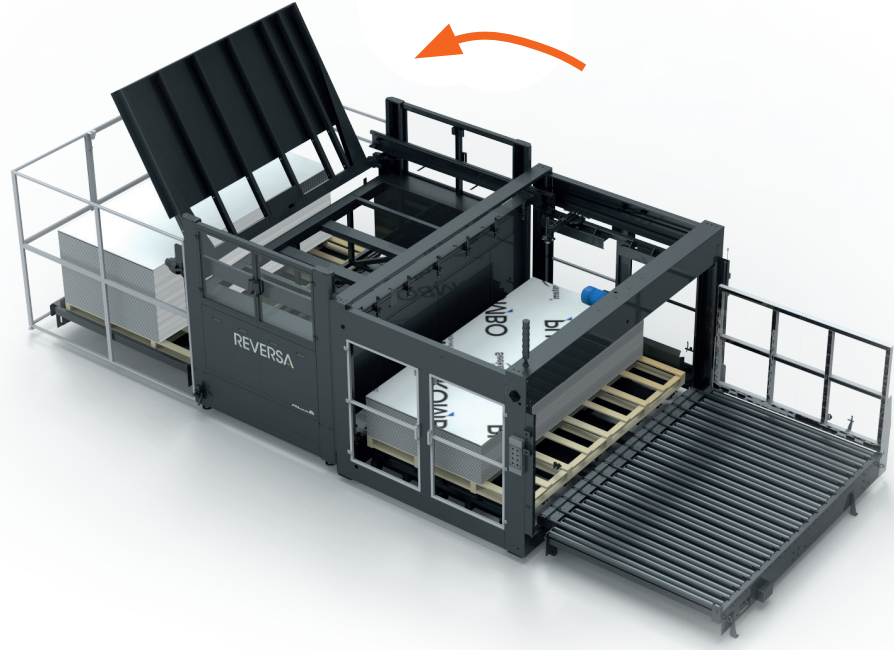


2



3

**REVERSA  
INTEGRATED**



## Stand-alone

TECHNICAL SHEET	Load Max Height 760 mm		Load Max Height 1200 mm	
	Working Area (X-Y) mm	1600x3200	2200x3200	1600x3200
Suction Sectors	12		12	
Machine Footprint (X-Y-H)	3800x5500x3500	3800x7300x3500	3800x5500x4000	3800x7300x4000
Weight kg	2600	2900	2700	3000
Power Supply	3F + Ground, 400Volts, 50/60 Hz, 6 kW		3F + Ground, 400Volts, 50/60 Hz, 6 kW	
Pneumatic Connection	6/8 bars, 600 l/min		6/8 bars, 600 l/min	
Minimun dimension material	800x800	800x800	800x800	800x800
Maximun dimension material	1600x3200	2200x3200	1600x3200	2200x3200

## Integrated

TECHNICAL SHEET		
Working Area (X-Y) mm	1600x3200	2200x3200
Suction Sectors	12	
Machine Footprint (X-Y-H)	8100x3800x4000	10500x3800x4000
Weight kg	3600	4000
Power Supply	3F + Ground, 400Volts, 50/60 Hz, 6 kW	
Pneumatic Connection	6/8 bars, 600 l/min	
Minimun dimension material	800x800	800x800
Maximun dimension material	1600x3200	2200x3200



ELITRON IPM srl  
Viale I Maggio, 42  
63813 Monte Urano (FM)-Italy.

+39 0734.842221  
elitron@elitron.com  
[www.elitron.com](http://www.elitron.com)